

# LATCH DEADLOCK | SUPERLOCK 2.0

SPECIFICATION  
SHEET  
**BLD 2.0**



## PRODUCT DETAILS

Engineered for strength, the new one-piece casing design eliminates joints and welds, providing enhanced durability and a sleek, professional appearance.

Built to withstand harsh environments, improved materials and finishes deliver longer-lasting protection against rust and weathering.

Constructed for high-impact outdoor use, ensuring unmatched strength, security, and reliability.

Product code:	Description:
<b>BLD1030</b>	To fit flat bar and up to 30mm (1 ¼") box section
<b>BLD4060</b>	To fit 40 to 60mm box section (1 ½" to 2 ¼")
Style of handle:	Description:
<b>P</b>	Plain lever handle set
<b>T</b>	Traditional handle set



**P handle**



**T handle**

Locking bolt: Adjustable, latch retracts 15mm (5/8") and deadbolt throws out 15mm (5/8").

Perfect for both left hand and right hand gates.

## WHAT IS INCLUDED IN THE BOX:



**Lock**



**Handles**  
(one set depending  
on your choice)



**Face plate**



**Bolts**



**Hex Key**



**Latch bolt**

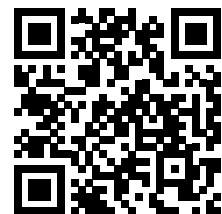
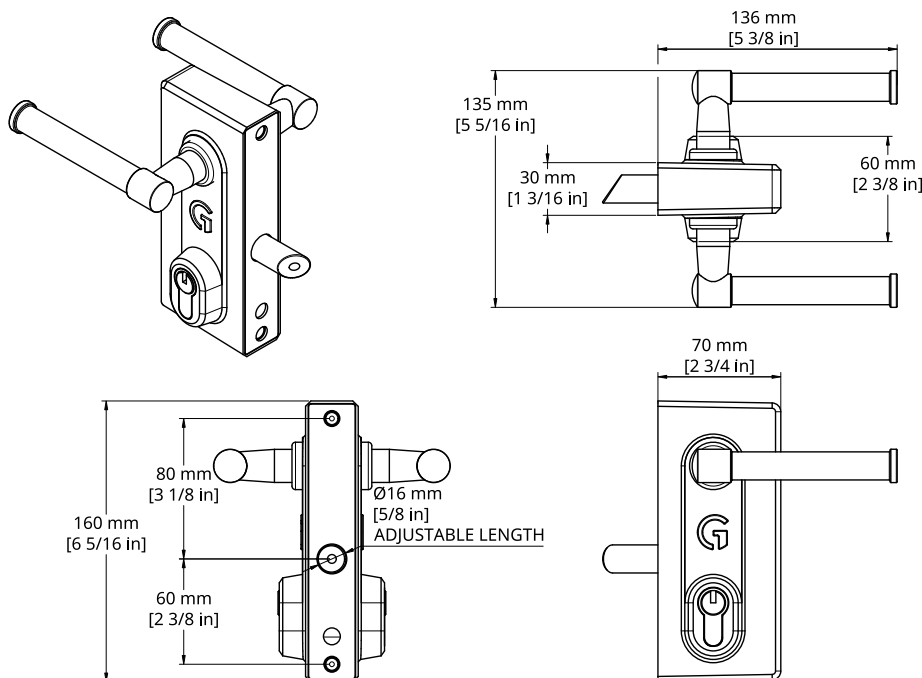
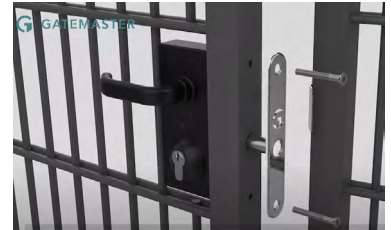
# LATCH DEADLOCK | SUPERLOCK 2.0

**SPECIFICATION  
SHEET**  
**BLD 2.0**

## INSTALLATION

1. Drill 2 x 9mm (3/8") holes at 140mm (5 1/2") centres for fixing bolts provided.
2. Drill a second 18mm (3/4") clearance hole for the latchbolt at 60mm (2 3/8") centres up from the bottom fixing hole.
3. Hold the lock against the back of the box section and screw the latchbolt through the middle hole.
4. Lock the latchbolt and deadbolt with the hex key supplied by inserting the hex key into the end of the latchbolt and the deadbolt.
5. Fix lock in place using the stainless steel bolt support plate and the countersunk screws provided. Ensure the latchbolt and deadbolt move freely.
6. Fix strike plate by either welding or screw fixing onto the gate post

**MAINTENANCE:** Every 6 months, lubricate the latchbolt and deadbolt with light oil. Annually, dismantle the lock and spray mechanism with light oil.



Watch installation video

## COMPATIBLE PRODUCTS



**Superlock Secure Keep  
(BSK)**



**Superlock Interlocking Keep  
(BSKS)**



**Superlock Gapless Keep  
(BSKG)**